

## Switched PDU

Switched PDU provides remote manual control of the critical devices by clicking on a few buttons on the smart phone or computer webpage. Stop the problem device by cutting off the power to a specific outlet. By cycling the power off and restarting the device remotely, you save time and money by eliminating the need to send technicians to the root cause of the problem.

Managers can monitor the total power usage information of PDU from the remote end through the Internet to fully understand the power consumption of all the devices. Set up overload event alerts and notify managers via Email and TRAP, allowing managers to respond to crises in the shortest possible time to minimize disasters.

Switched PDU has one environmental sensor ports that track climate information: temperature and humidity environment variables. The data is available from any web browser and is SNMP-compliant for easy tracking of critical data without the use of any external software.

Provide central management software, which can manage a large number of PDUs' power, temperature and humidity information. The database stores the power consumption information of the power strip and provides the history curve chart for the manager's reference.

## Features:

### System Function:

- ⌘ Built-in embedded system:  
Support 10M Ethernet interface, provides webpage and SNMP remote management.
- ⌘ Multiple protocols:  
Support ICMP, ARP, IP, TCP, UDP, DHCP, HTTP, NTP, SNMP v1.
- ⌘ Local display information:  
Seven-segments can display current, web site and temperature and humidity values.

### Power Management:



#### Remote Monitor

Remote monitoring PDU status by web and SNMP.



#### Remote Control

Remote per outlet on/off by web and SNMP.



#### Current Measurement

Measure PDU total current consumption.



#### Mail Notification

Notify specified user by mail and SNMP when outlet action or current over threshold.



#### Threshold Sensing

User-definable warning and overload threshold value as the basis for alarm.



#### Event Alert

When current exceeds the preset threshold, PDU will beep and LED will flash.



### Power Sequence

User-definable power on/off sequence time.



### Schedule Control

Timed & scheduled on/off/reboot control.



### Ping Event Control

When the specified IT device does not respond to PING, the output will perform a preset power action.



### Overload Protection

When overload, circuit breaker will automatically trip to protect the safety of electricity.



### Group Control

Set multiple outlets as a single group while controlling the power output.



### kWh Measurement

Voltage, frequency, power factor, active power, apparent power and kWh measurement. (available by model)



### Environment Detection

Optional accessory probe to detect temperature and humidity.



### Central Management

Free centralized monitoring software, real-time monitoring of a large number of PDU, provide data records and history chart.

## Model List

Model Number	Output	Input	Voltage	Capacity
<a href="#">PWV-3223C-16N2</a>	(14) IEC 320 C13 (2) IEC 320 C19	IEC309, power cord, 3m	230V	32 Amp
<a href="#">PWV-3223C-24N3</a>	(21) IEC 320 C13 (3) IEC 320 C19	IEC309, power cord, 3m	230V	32 Amp
<a href="#">PPV-3240C-24N6</a>	(18) IEC 320 C13 (6) IEC 320 C19	IEC309, power cord, 3m	400V AC, 3-Phase 3P+N+G / 230V	32 Amp / phase
<a href="#">PPV-1640C-24N3</a>	(21) IEC 320 C13 (3) IEC 320 C19	IEC309, power cord, 3m	400V AC, 3-Phase 3P+N+G / 230V	16 Amp / phase
<a href="#">PSH-1623K-08N1</a>	(8) IEC 320 C13	Inlet IEC320 C20 Power cord, C19 to C20, 3m	230V	16 Amp
<a href="#">PWV-3011M-16N2</a>	(16) NEMA 5-15/20R	NEMA L5-30P, power cord, 3m	115V	30 Amp
<a href="#">PWV-3011M-24N3</a>	(24) NEMA 5-15/20R	NEMA L5-30P, power cord, 3m	115V	30 Amp
<a href="#">PWV-3020P-16N2</a>	(14) IEC 320 C13 (2) IEC 320 C19	NEMA L6-30P, power cord, 3m	208V	30 Amp
<a href="#">PWV-3020P-24N3</a>	(21) IEC 320 C13 (3) IEC 320 C19	NEMA L6-30P, power cord, 3m	208V	30 Amp
<a href="#">PSH-1511A-08N1</a>	(8) NEMA 5-15/20R	Inlet IEC320 C20 Power cord, C19 to NEMA 5-15P, 3m	115V	15 Amp

## PWV-3223C-16N2



### Specification

Output		Input	
Voltage	200-240 VAC	Voltage	200-240 VAC
Max. Current	32 A	Frequency	50/60Hz, full range
Outlet	(14) IEC320 C13 (2) IEC320 C19	Max. Capacity	7360 VA
		Connection	IEC309, power cord, 3 m
		Overload Protection	(2) 16A circuit breaker (UL1077)
Measurement		Other	
Current	+/-2%+/-0.1A @0.2A ~ 20A	ENV Connection	RJ11
Dimension/Weight		Operation	
Size	1245 x 56 x 44 mm	Operation Temp.	0 ~ 45°C
Weight	4.2 kg	Operation Humid.	0% ~ 90% RH
Package Size	1360 x 220 x 110 mm	Storage Temp.	-20°C ~ 65°C
Package Weight	5.2 kg	Storage Humid.	0% ~ 90% RH
Approval			
Certification	CE, FCC		
Warranty	2 years		

## Package

No.	Description
1	PDU 1 set
2	Rack mount accessories 1 set
3	Software CD (manual, MIB)

## Accessory

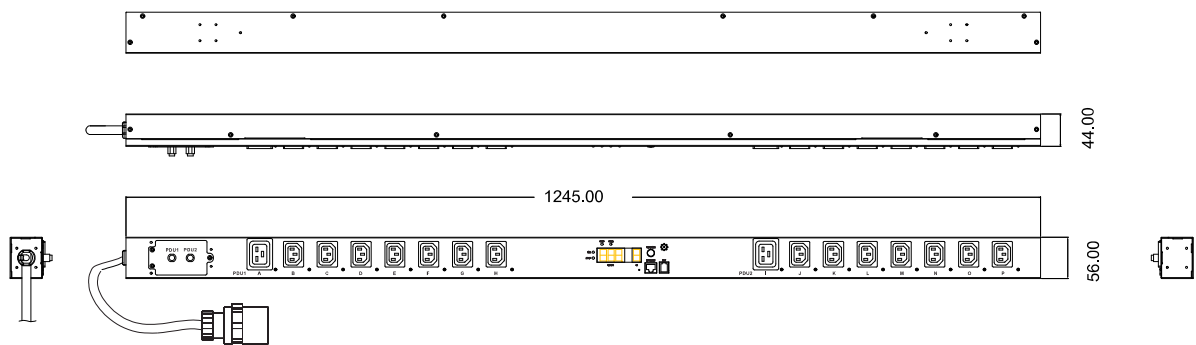
Model Number	Model Name
CPM-ENV-2	Temp./Humidity probe (ENV)
STR-C14-B	C13 socket protection



STR-C20-B	C19 socket protection
-----------	-----------------------



## Line Drawing



## PWV-3223C-24N3



### Specification

Output		Input	
Voltage	200-240 VAC	Voltage	200-240 VAC
Max. Current	32 A	Frequency	50/60Hz, full range
Outlet	(21) IEC320 C13 (3) IEC320 C19	Max. Capacity	7360 VA
		Connection	IEC309, power cord, 3 m
		Overload Protection	(3) 16A circuit breaker (UL1077)
Measurement		Other	
Current	+/-2%+/-0.1A @0.2A ~ 20A	ENV Connection	RJ11
Dimension/Weight		Operation	
Size	1778 x 56 x 44 mm	Operation Temp.	0 ~ 45°C
Weight	6 kg	Operation Humid.	0% ~ 90% RH
Package Size	1890 x 220 x 110 mm	Storage Temp.	-20°C ~ 65°C
Package Weight	7.2 kg	Storage Humid.	0% ~ 90% RH
Approval			
Certification	CE, FCC		
Warranty	2 years		

## Package

No.	Description
1	PDU 1 set
2	Rack mount accessories 1 set
3	Software CD (manual, MIB)

## Accessory

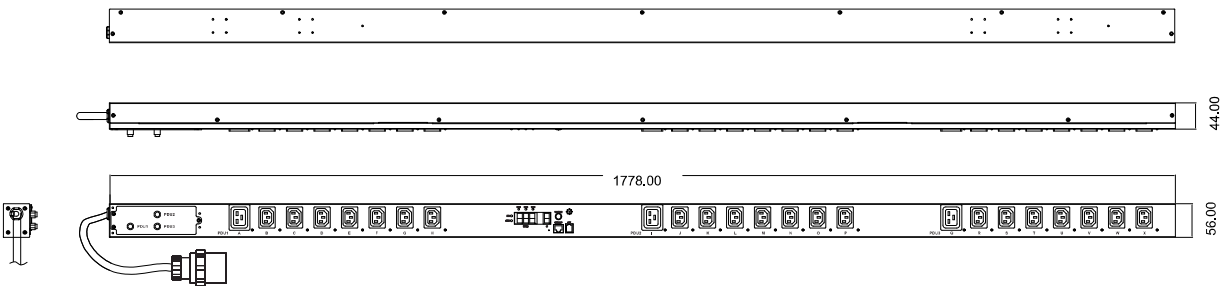
Model Number	Model Name
CPM-ENV-2	Temp./Humidity probe (ENV)
STR-C14-B	C13 socket protection



STR-C20-B	C19 socket protection
-----------	-----------------------



## Line Drawing



# PPV-1640C-24N3



## Specification

Output		Input	
Voltage	200-240 VAC	Voltage	400 VAC, 3 Phase 3P+N+PE
Max. Current	16 A / phase	Frequency	50/60Hz, full range
Outlet	(21) IEC320 C13 (3) IEC320 C19	Max. Capacity	11 kVA
		Connection	IEC309, power cord, 3 m
		Overload Protection	(3) 16A circuit breaker (UL1077)
Measurement		Other	
Current	+/-2%+/-0.1A @0.2A ~ 20A	ENV Connection	RJ11
Dimension/Weight		Operation	
Size	1778 x 56 x 44 mm	Operation Temp.	0 ~ 45°C
Weight	5.7 kg	Operation Humid.	0% ~ 90% RH
Package Size	1890 x 220 x 110 mm	Storage Temp.	-20°C ~ 65°C
Package Weight	6.9 kg	Storage Humid.	0% ~ 90% RH
Approval			
Certification	CE, FCC		
Warranty	2 years		



## Package

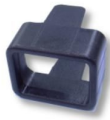
No.	Description
1	PDU 1 set
2	Rack mount accessories 1 set
3	Software CD (manual, MIB)

## Accessory

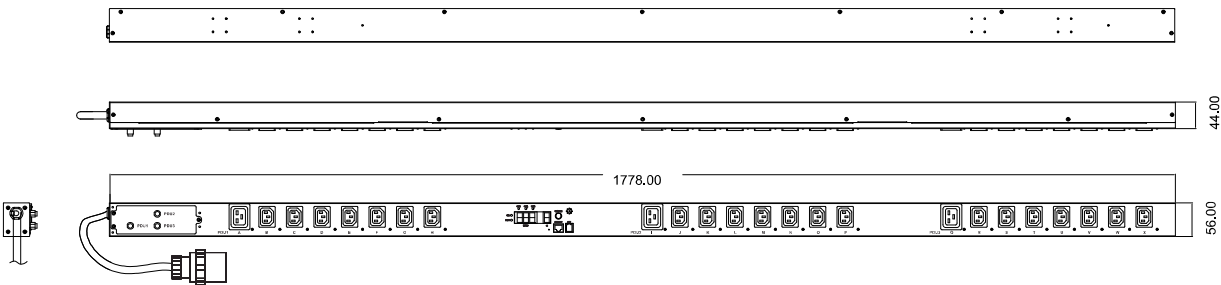
Model Number	Model Name
CPM-ENV-2	Temp./Humidity probe (ENV)
STR-C14-B	C13 socket protection



STR-C20-B	C19 socket protection
-----------	-----------------------



## Line Drawing



# PPV-3240C-24N6



## Specification

Output		Input	
Voltage	200-240 VAC	Voltage	400 VAC, 3 Phase 3P+N+PE
Max. Current	32 A / phase	Frequency	50/60Hz, full range
Outlet	(18) IEC320 C13 (6) IEC320 C19	Max. Capacity	22 kVA
		Connection	IEC309, power cord, 3 m
		Overload Protection	(6) 16A circuit breaker (UL489)
Measurement		Other	
Current	+/-2%+/-0.1A @0.2A ~ 20A	ENV Connection	RJ11
Dimension/Weight		Operation	
Size	1645 x 56 x 80 mm	Operation Temp.	0 ~ 45°C
Weight	8.0 kg	Operation Humid.	0% ~ 90% RH
Package Size	1890 x 220 x 110 mm	Storage Temp.	-20°C ~ 65°C
Package Weight	9.2 kg	Storage Humid.	0% ~ 90% RH
Approval			
Certification	CE, FCC		
Warranty	2 years		

## Package

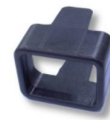
No.	Description
1	PDU 1 set
2	Rack mount accessories 1 set
3	Software CD (manual, MIB)

## Accessory

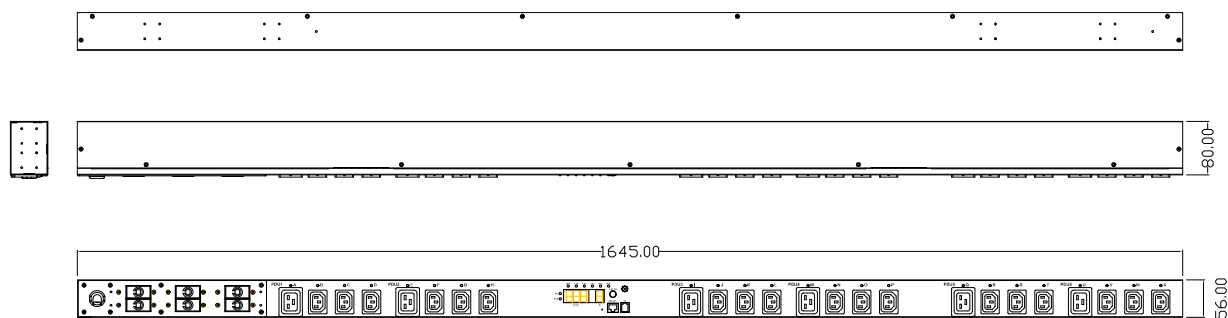
Model Number	Model Name
CPM-ENV-2	Temp./Humidity probe (ENV)
STR-C14-B	C13 socket protection



STR-C20-B	C19 socket protection
-----------	-----------------------



## Line Drawing



# PSH-1623K-08N1



## Specification

Output		Input	
Voltage	200-240 VAC	Voltage	200-240 VAC
Max. Current	16 A	Frequency	50/60Hz, full range
Outlet	(8) IEC320 C13	Max. Capacity	3680 VA
		Connection	IEC320 C20
		Overload Protection	Circuit breaker (UL1077)
Measurement		Other	
Current	+/-2%+/-0.1A @0.2A ~ 20A	ENV Connection	RJ11
Voltage	+/- 1% +/- 1V @80V~260V		
Active Power	+/- 1% +/- 5W @50W~8000W		
Apparent Power	+/- 1% @50VA~8000VA		
Frequency	+/- 1% @50~65Hz		
Power Factor	+/- 1% @0.1~1.0		
kWh	.001kWh~99999.999kWh, (+/- 1% @50W~8000W) kh=1.0		
Dimension/Weight		Operation	
Size	432 x 125 x 44 mm	Operation Temp.	0 ~ 45℃
Weight	2.5 kg	Operation Humid.	0% ~ 90% RH

Package Size 505 x 210 x 90 mm

Storage Temp. -20℃ ~ 65℃

Package Weight 2.8 kg

Storage Humid. 0% ~ 90% RH

### Approval

Certification CE, FCC

Warranty 2 years

## Package

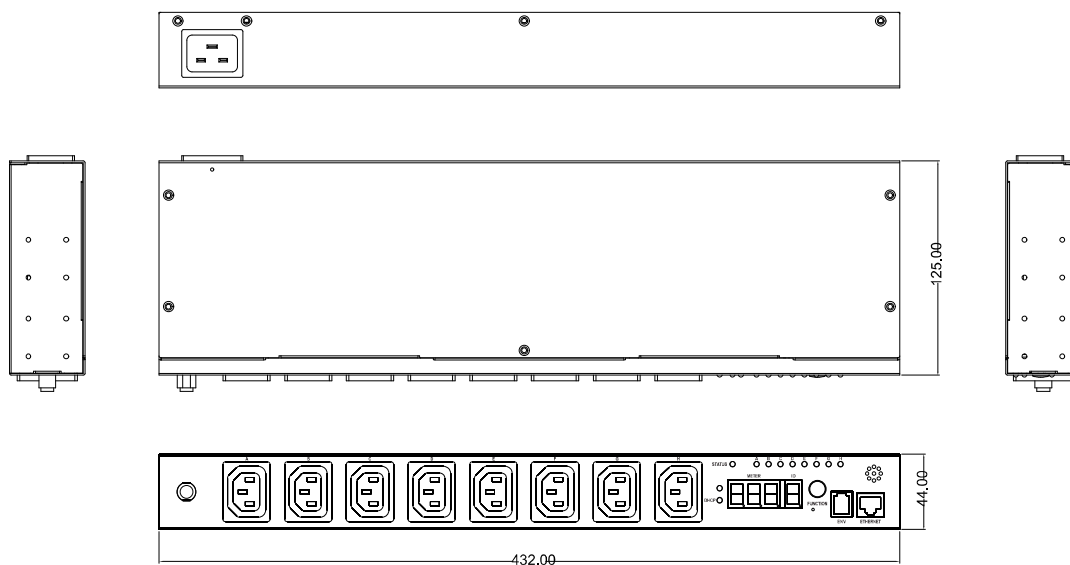
No.	Description
1	PDU 1 set
2	Rack mount accessories 1 set
3	Software CD (manual, MIB)
4	C19 to C20, power cord, 3m

## Accessory

Model Number	Model Name
CPM-ENV-2	Temp./Humidity probe (ENV)
STR-C14-B	C13 socket protection



## Line Drawing



# PWV-3011M-16N2



Plug

## Specification

Output		Input	
Voltage	100-127 VAC	Voltage	100-127 VAC
Max. Current	30 A	Frequency	50/60Hz, full range
Outlet	(16) NEMA 5-15/20R	Max. Capacity	3600 VA
		Connection	NEMA L5-30P, power cord, 3 m
		Overload Protection	(2) 20A circuit breaker (UL1077)
Measurement		Other	
Current	+/-2%+/-0.1A @0.2A ~ 20A	ENV Connection	RJ11
Dimension/Weight		Operation	
Size	1245 x 56 x 44 mm	Operation Temp.	0 ~ 45°C
Weight	4.2 kg	Operation Humid.	0% ~ 90% RH
Package Size	1360 x 220 x 110 mm	Storage Temp.	-20°C ~ 65°C
Package Weight	5.2 kg	Storage Humid.	0% ~ 90% RH
Approval			
Certification	CE, FCC		
Warranty	2 years		

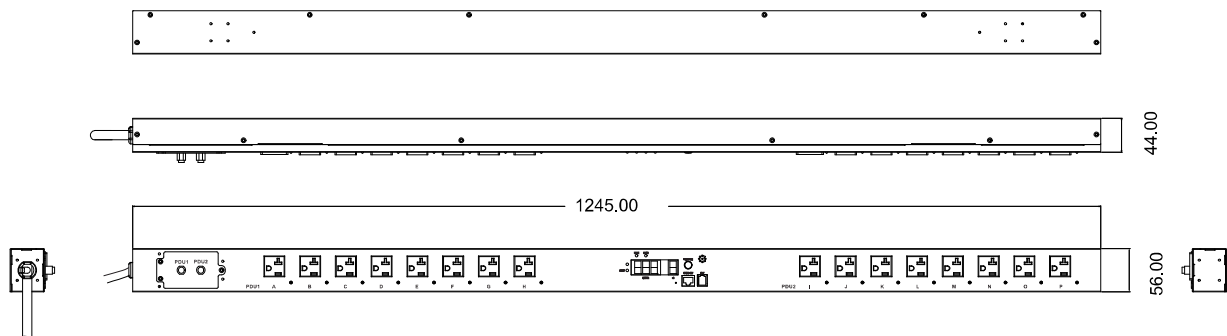
## Package

No.	Description
1	PDU 1 set
2	Rack mount accessories 1 set
3	Software CD (manual, MIB)

## Accessory

Model Number	Model Name
CPM-ENV-2	Temp./Humidity probe (ENV)

## Line Drawing



# PWV-3011M-24N3



## Specification

Output		Input	
Voltage	100-127 VAC	Voltage	100-127 VAC
Max. Current	30 A	Frequency	50/60Hz, full range
Outlet	(24) NEMA 5-15/20R	Max. Capacity	3600 VA
		Connection	NEMA L5-30P, power cord, 3 m
		Overload Protection	(3) 20A circuit breaker (UL1077)
Measurement		Other	
Current	+/-2%+/-0.1A @0.2A ~ 20A	ENV Connection	RJ11
Dimension/Weight		Operation	
Size	1778 x 56 x 44 mm	Operation Temp.	0 ~ 45°C
Weight	6 kg	Operation Humid.	0% ~ 90% RH
Package Size	1890 x 220 x 110 mm	Storage Temp.	-20°C ~ 65°C
Package Weight	7.2 kg	Storage Humid.	0% ~ 90% RH
Approval			
Certification	CE, FCC		
Warranty	2 years		



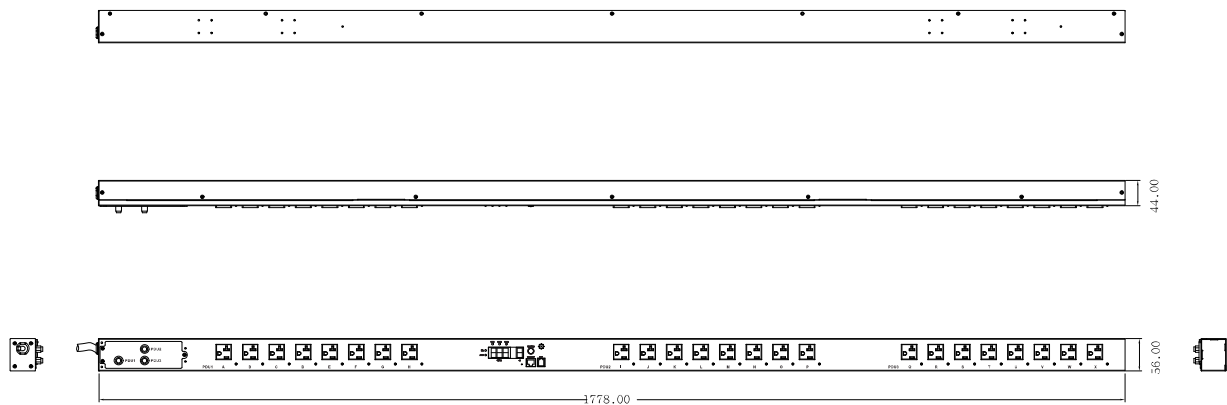
## Package

No.	Description
1	PDU 1 set
2	Rack mount accessories 1 set
3	Software CD (manual, MIB)

## Accessory

Model Number	Model Name
CPM-ENV-2	Temp./Humidity probe (ENV)

## Line Drawing



# PWV-3020P-16N2



## Specification

Output		Input	
Voltage	200-240 VAC	Voltage	200-240 VAC
Max. Current	30 A	Frequency	50/60Hz, full range
Outlet	(14) IEC320 C13	Max. Capacity	6240 VA
	(2) IEC320 C19	Connection	NEMA L6-30P, power cord, 3 m
		Overload Protection	(2) 16A circuit breaker (UL1077)
Measurement		Other	
Current	+/-2%+/-0.1A @0.2A ~ 20A	ENV Connection	RJ11
Dimension/Weight		Operation	
Size	1245 x 56 x 44 mm	Operation Temp.	0 ~ 45°C
Weight	4.2 kg	Operation Humid.	0% ~ 90% RH
Package Size	1360 x 220 x 110 mm	Storage Temp.	-20°C ~ 65°C
Package Weight	5.2 kg	Storage Humid.	0% ~ 90% RH
Approval			
Certification	CE, FCC		
Warranty	2 years		

## Package

No.	Description
1	PDU 1 set
2	Rack mount accessories 1 set
3	Software CD (manual, MIB)

## Accessory

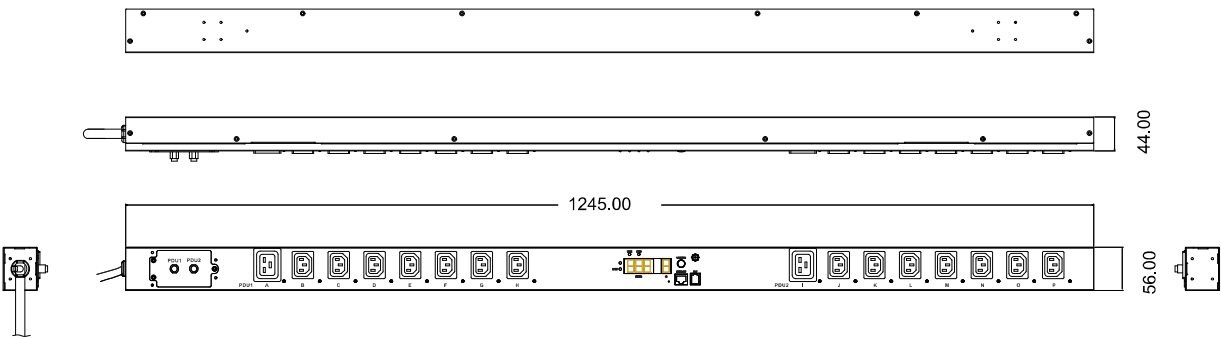
Model Number	Model Name
CPM-ENV-2	Temp./Humidity probe (ENV)
STR-C14-B	C13 socket protection



STR-C20-B	C19 socket protection
-----------	-----------------------



## Line Drawing



## PWV-3020P-24N3



### Specification

Output		Input	
Voltage	200-240 VAC	Voltage	200-240 VAC
Max. Current	30A	Frequency	50/60Hz, full range
Outlet	(21) IEC320 C13 (3) IEC320 C19	Max. Capacity	6240 VA
		Connection	NEMA L6-30P, power cord, 3 m
		Overload Protection	(3) 16A circuit breaker (UL1077)
Measurement		Other	
Current	+/-2%+/-0.1A @0.2A ~ 20A	ENV Connection	RJ11
Dimension/Weight		Operation	
Size	1778 x 56 x 44 mm	Operation Temp.	0 ~ 45°C
Weight	6 kg	Operation Humid.	0% ~ 90% RH
Package Size	1890 x 220 x 110 mm	Storage Temp.	-20°C ~ 65°C
Package Weight	7.2 kg	Storage Humid.	0% ~ 90% RH
Approval			
Certification	CE, FCC		
Warranty	2 years		

## Package

No.	Description
1	PDU 1 set
2	Rack mount accessories 1 set
3	Software CD (manual, MIB)

## Accessory

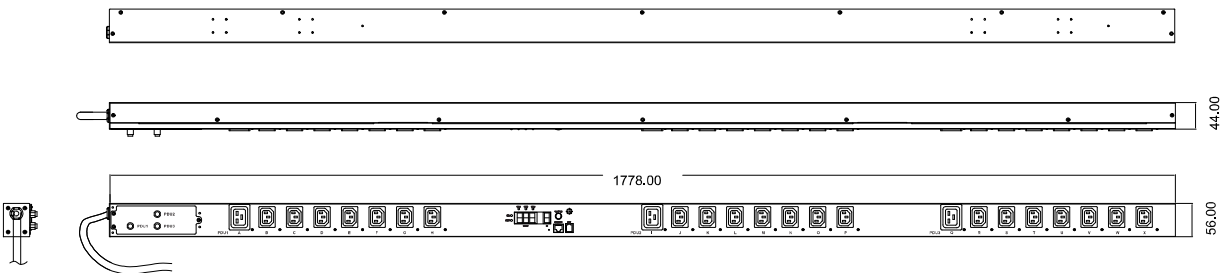
Model Number	Model Name
CPM-ENV-2	Temp./Humidity probe (ENV)
STR-C14-B	C13 socket protection



STR-C20-B	C19 socket protection
-----------	-----------------------



## Line Drawing



# PSH-1511A-08N1



## Specification

Output		Input	
Voltage	100-127 VAC	Voltage	100-127 VAC
Max. Current	15 A	Frequency	50/60Hz, full range
Outlet	(8) NEMA 5-15/20R	Max. Capacity	1800 VA
		Connection	IEC320 C20
		Overload Protection	Circuit breaker (UL1077)
Measurement		Other	
Current	+/-2%+/-0.1A @0.2A ~ 20A	ENV Connection	RJ11
Voltage	+/- 1% +/- 1V @80V~260V		
Active Power	+/- 1% +/- 5W @50W~8000W		
Apparent Power	+/- 1% @50VA~8000VA		
Frequency	+/- 1% @50~65Hz		
Power Factor	+/- 1% @0.1~1.0		
kWh	.001kWh~99999.999kWh, (+/- 1% @50W~8000W) kh=1.0		
Dimension/Weight		Operation	
Size	432 x 125 x 44 mm	Operation Temp.	0 ~ 45℃
Weight	2.5 kg	Operation Humid.	0% ~ 90% RH

Package Size 505 x 210 x 90 mm

Storage Temp. -20℃ ~ 65℃

Package Weight 2.8 kg

Storage Humid. 0% ~ 90% RH

### Approval

Certification CE, FCC

Warranty 2 years

## Package

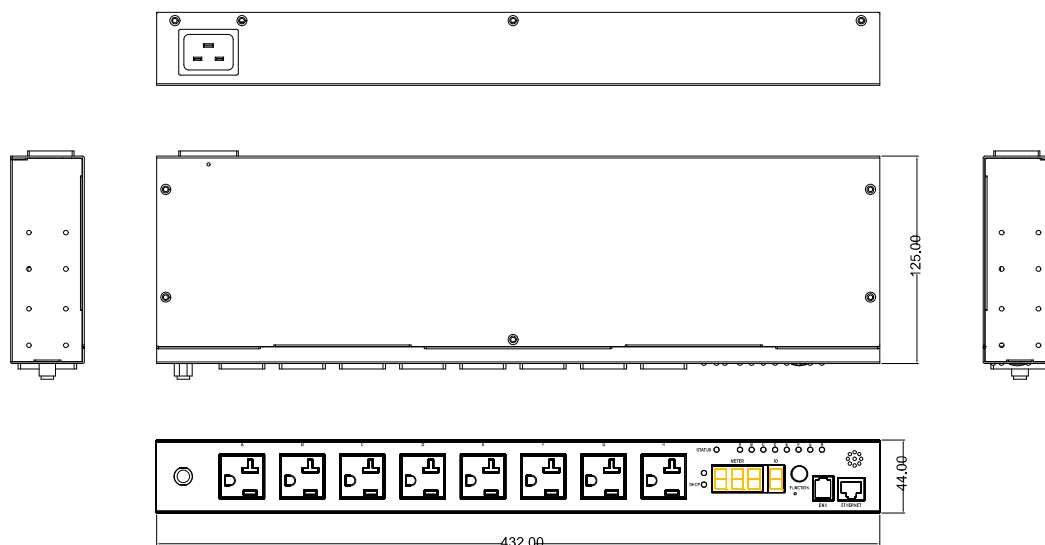
No.	Description
1	PDU 1 set
2	Rack mount accessories 1 set
3	Software CD (manual, MIB)
4	C19 to NEMA 5-15P, power cord, 3m

## Accessory

Model Number	Model Name
CPM-ENV-2	Temp./Humidity probe (ENV)
STR-C14-B	C13 socket protection



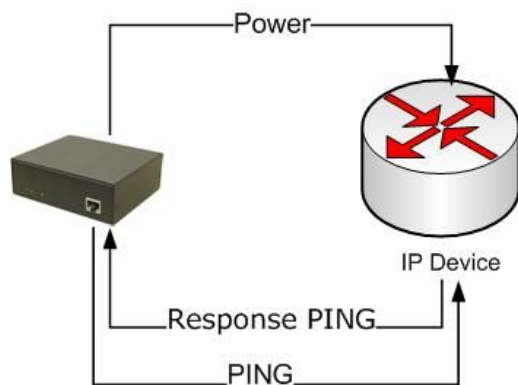
## Line Drawing



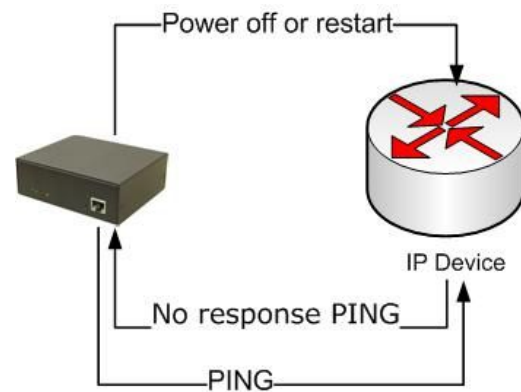
## Annex. 1

### Ping Function

The device responds PING normally



The device is not responding PING properly





## Annex. 2

### Temp./Humidity Probe



#### Specification

Hardware			
Connection	RJ11, cord 1.8m		
Temperature		Humidity	
Range	-30°C~70°C	Range	0~100%
Resolution	0.1°C	Resolution	0.1%
Precision	±1°C	Precision@ 5°C~60°C, 20%~80%	± 3%
		Precision@ other condition	±5%
		Sampling rate	1 second
Operation		Dimension/Weight	
Operation Temp.	0°C~50.0°C	Size	127 x 22 x 20 mm
Storage Temp.	-20.0°C~60.0°C	Weight	62 g
		Package Size	185 x 110 x 56 mm
		Package Weight	110 g