

220v

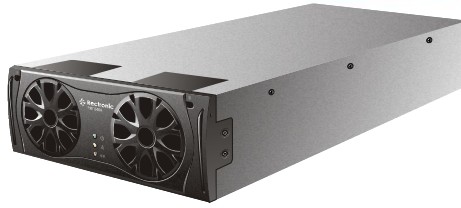
Nominal Input Voltage

48V

Nominal Output Voltage

1.8kW

Maximum Output Power



RM1848A 1.8kW 48V DC Modular Rectifier

AC Input:

Nominal Voltage:	220V
Voltage Range:	90-300V(reduced power below 175V)
Maximum Input Current:	11.2A
Frequency Range:	45-65Hz
Power Factor:	>0.99
Efficiency:	>92%
Protection:	
Input Voltage:	Auto shutdown, auto restart when correct voltage restored
Input Inrush:	<1.5 x maximum input current

DC Output:

Nominal Voltage:	48V
Voltage Range:	42-60V
Maximum Output Power:	1800W
Regulation:	
Line:	±0.1%
Load:	±1.0%(no load to full load)
Hold-up Time:	>10ms for 20% output voltage drop
Start-up Time:	Start up delay 5 second.(varies with AC supply voltage), Walk-in delay 3 seconds at full output. (varies with DC output voltage)

Protection:

Current Limit:	Adjustable to 50-100% of maximum rated current
Over Temperature:	Automatic current turndown, backup shutdown protection
Polarity Reversal:	Output fuse with crowbar diode
Over Voltage:	Adjustable limit
Noise:(under nominal conditions)	
Voice Band:	<2mV rms psophometric
Wide Band:	3.4KHz-150KHz: <50mV rms unweighted 150KHz-30MHz: <20mV rms unweighted
Peak to Peak 0-20MHz:	<200mV peak to peak
Load Share:	±5%

Isolation:

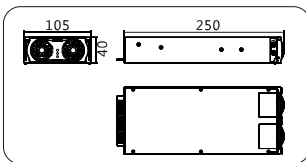
Input to Output:	3000V AC/10mA/1min
Input to Chassis:	1500V AC/10mA/1min(VDR to chassis removed)
Output to Chassis:	500V AC/10mA/1min

Environmental:

Operating Temperature:	-25 to +65°C (maximum output power is derated above 55°C)
Storage Temperature:	-45 to +70°C
Humidity:	5-95%RH(non-condensing)
Altitude:	<2500m, De-rate maximum ambient temperature by 4°C per 1000m above sea level

Mechanical:

Dimensions, W, H, D:	105mm, 40mm, 250mm
Weight:	<1.5kg



Mechanical Drawing