

24V

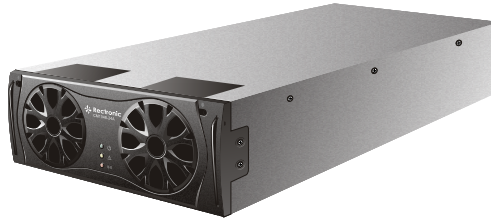
Nominal DC Input Voltage

48v

Nominal DC Output Voltage

1.0w

Maximum Output Power



CM1048-24A 1.0kW 24V to 48V DC-DC Modular Converter

DC Input:

Nominal Voltage:	24V
Voltage Range:	20-32V
Efficiency:	>90%
Protection:	
Input Voltage:	Auto shutdown, auto restart when correct voltage restored
Input Inrush:	<1.5x maximum input current

DC Output:

Nominal Voltage:	48V
Voltage Range:	42-60V
Maximum Output Power:	1000W
Regulation:	
Line:	±0.1%
Load:	±1.0%(no load to full load)
Hold-up Time:	>10ms for 20% output voltage drop
Start-up Time:	Walk-in delay 2-8 seconds depending on load and output voltage

Protection:

Current Limit:	Adjustable to 50-100% of maximum rated current
Over Temperature:	Automatic current turndown, backup shutdown protection
Polarity Reversal:	Output fuse with crowbar diode
Over Voltage:	Adjustable limit
Noise:(under nominal conditions)	
Voice Band:	<2mV rms psophometric
Wide Band:	3.4KHz-150KHz: <50mV rms unweighted 150KHz-30MHz: <20mV rms unweighted

Peak to Peak 0-20MHz:

<200mV peak to peak

Load Share: ±5%

Isolation:

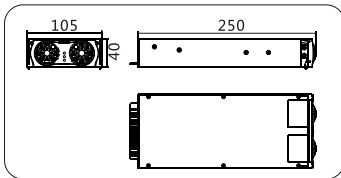
Input to Output:	4230V DC
Input to Chassis:	2115V DC(VDR to chassis removed)
Output to Chassis:	2115V DC

Environmental:

Operating Temperature:	-25 to +65°C (maximum output power is derated above 55°C)
Storage Temperature:	-45 to +70°C
Humidity:	5-95%RH(non-condensing)
Altitude:	<2500m, De-rate maximum ambient temperature by 4°C per 1000m above sea level

Mechanical:

Dimensions, W, H, D:	105mm, 40mm, 250mm
Weight:	<1.5kg



Mechanical Drawing